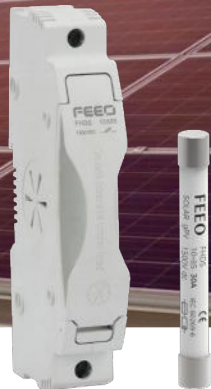


FHDS

Solar DC 1500V FUSE

A range of 10x85mm PV fuses specifically designed for protecting and isolating photovoltaic strings. These fuse links are capable of interrupting low overcurrents associated with faulted PV systems (reverse current, multi-array fault). Available in four mounting styles for application flexibility.



Structural Characteristics

- According to IEC60269-6
- Rated current: 1-35A
- Rated voltage: DC 1500V
- Rated breaking capacity: DC 20kA
- Operating class gPV for Solar protection

Specifications

Model	FHDS
Pole	1P
Rated Voltage Ue (V DC)	1000
Rated Current In (A)	1,2,3,4,5,6,8,10,12,15,20,25,30,32,35
Biggest Block Ability (KA)	20

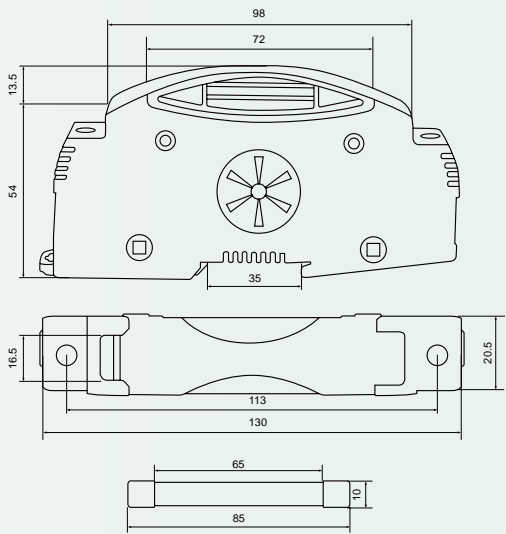
Connection and Installation

Connection (mm2)	2.5-10
Working Temperature	-30°C ~ +70°C
Resistance And Damp Hot	Class 2
Altitude (m)	2000
Relative Humidity	95%
Protection Class/Degree	IP20
Pollution	3
Installation Environment	No obvious shock and vibration
Installation Class/Type	Class III/DIN rail

PV Fuse Features

- Specifically designed to provide fast-acting protection under low fault current conditions associated with PV systems.
- Variety of mounting options for flexibility.
- Fuses meet IEC photovoltaic standards for global product acceptance.
- Low watts loss for greater PV system efficiency.
- Low heat rise permits more precise sizing.
- In-line crimp terminal version is easy to apply in wire harness construction.

Dimensions



Characteristic Curve

